

SINTERED STONE

800x
3000mm / 18 & 15 mm

SNOW WHITE

CRYSTAL WHITE

CRYSTAL BLACK

LIGHT GREY

DARK GREY

WALNUT

COLOR BODY /
FULL BODY

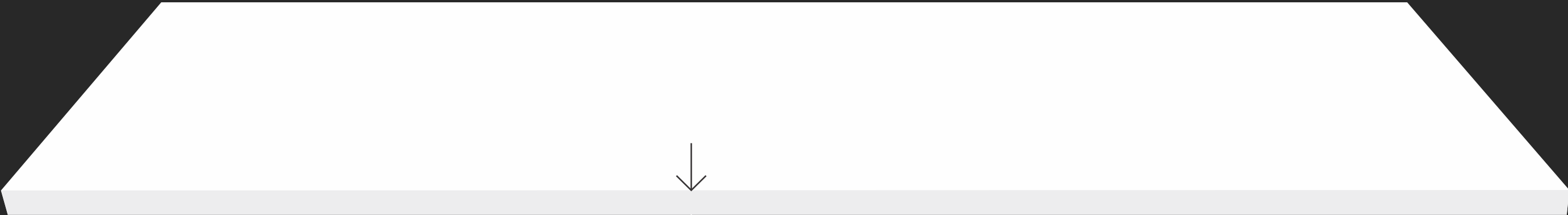
THICKNESS
15 MM

SIZE
800x3000 MM

FINISH
GLOSSY & MATT

SINTERED STONE

SINTERED STONE



18mm

WHITE NANO

THICKNESS

TYPE
FULL BODY

SIZE
800X3000MM

FINISH
GLOSSY

SNOW WHITE

Thickness
15mm

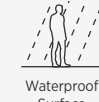
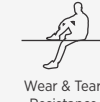
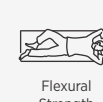
Finish & Type

Glossy Full Body

Matt Full Body



800
x3000 mm



SNOW WHITE

CRYSTAL WHITE

Thickness

15mm

Finish & Type

Glossy Full Body

Glossy Colour Body

Matt Full Body

SINTERED **STONE**

800
x3000 mm



Light Weight



Frost Resistance



Flexural Strength



Wear & Tear Resistance



Resistance to Heat



Waterproof Surface



Chemical Resistance



Resistance To UV Rays



Impact Resistance



Stain Resistance



CRYSTAL WHITE

CRYSTAL BLACK

Thickness

15mm

Finish & Type

Glossy Full Body

Glossy Colour Body

Matt Full Body



800
x3000 mm



Light Weight



Frost Resistance



Flexural Strength



Wear & Tear Resistance



Resistance to Heat



Waterproof Surface



Chemical Resistance



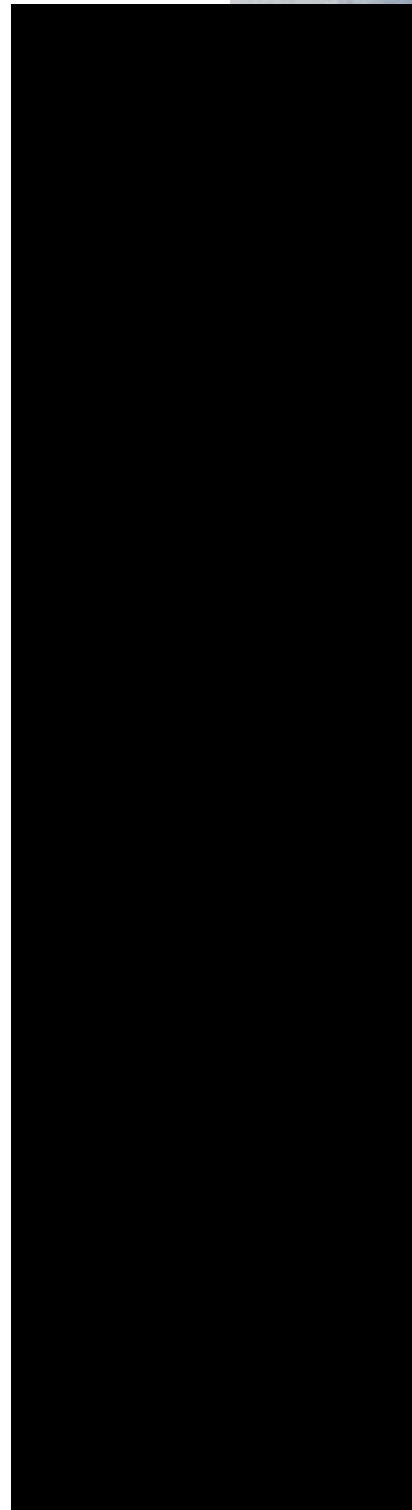
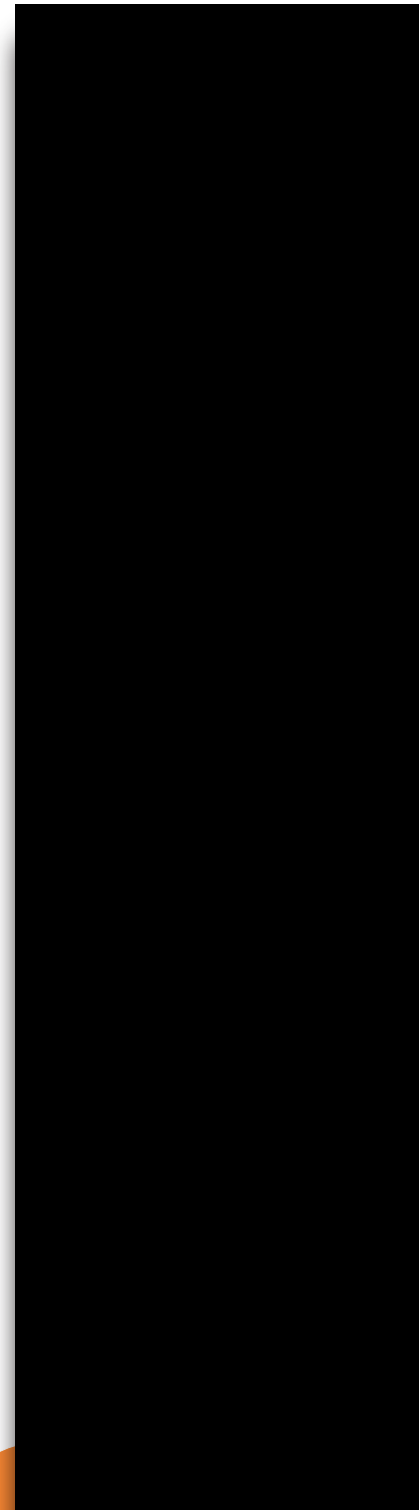
Resistance To UV Rays



Impact Resistance



Stain Resistance



CRYSTAL BLACK

LIGHT GREY

Thickness

15mm

Finish & Type

Glossy **Full Body**

Matt **Full Body**



800
x3000 mm



Light Weight



Frost Resistance



Flexural Strength



Wear & Tear Resistance



Resistance to Heat



Waterproof Surface



Chemical Resistance



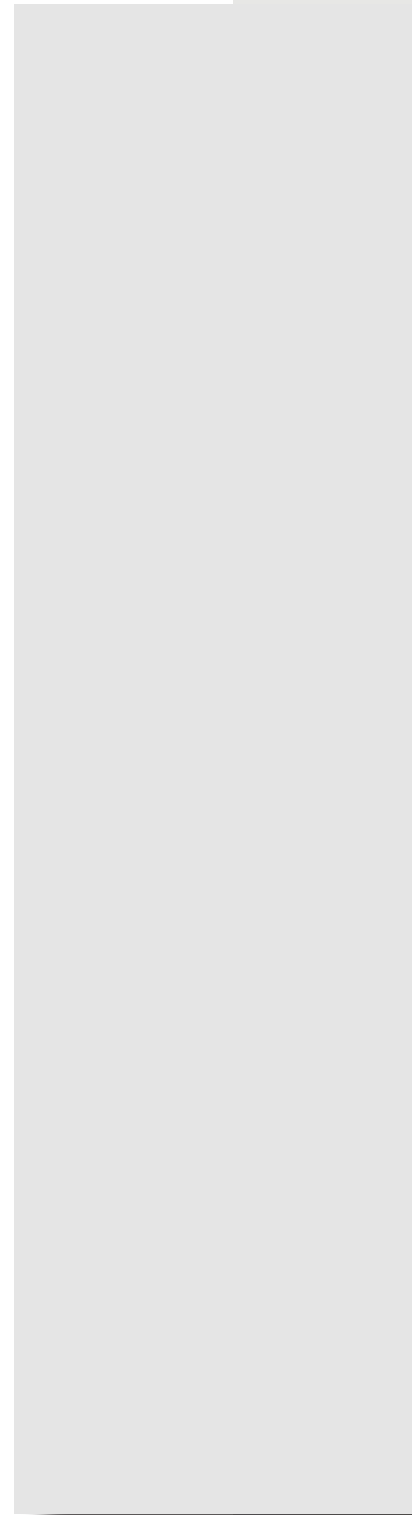
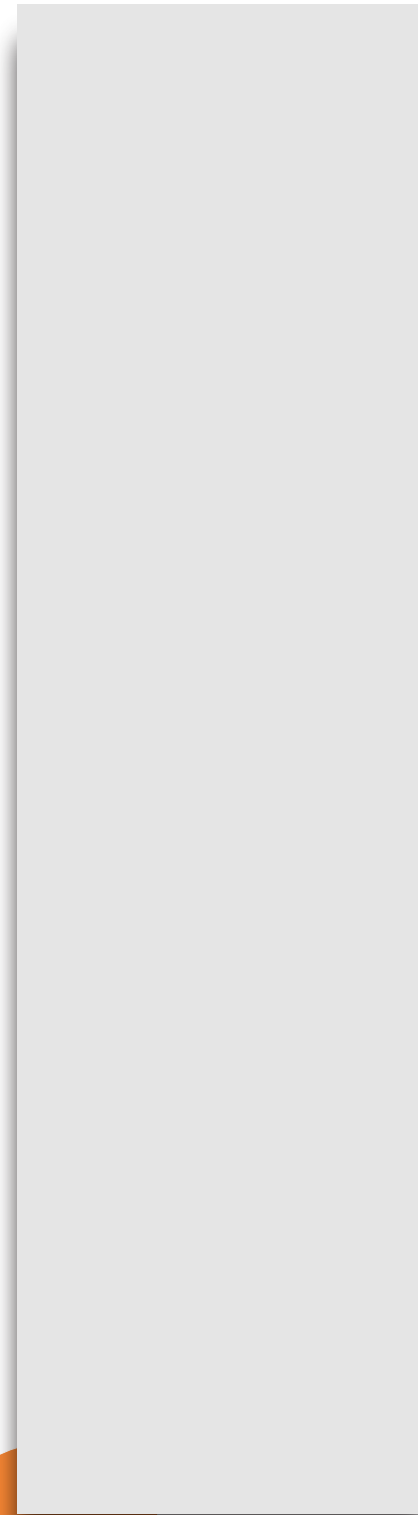
Resistance To UV Rays



Impact Resistance



Stain Resistance



LIGHT GREY

DARK GREY

Thickness

15mm

Finish & Type

Glossy **Full Body**

Matt **Full Body**



800
x3000 mm



Light Weight



Frost Resistance



Flexural Strength



Wear & Tear Resistance



Resistance to Heat



Waterproof Surface



Chemical Resistance



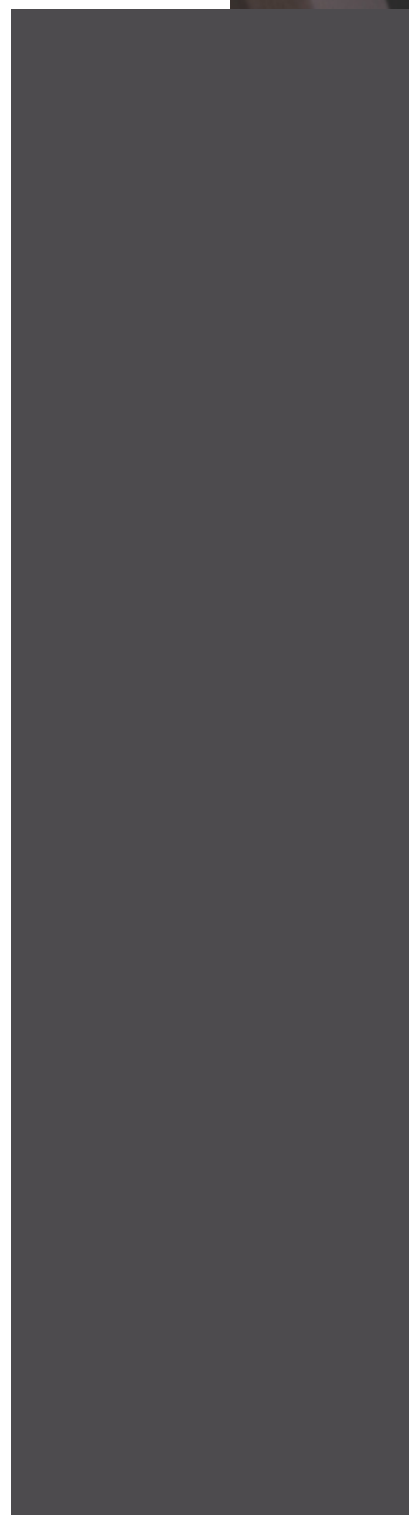
Resistance To UV Rays



Impact Resistance



Stain Resistance



DARK GREY

WALNUT

Thickness

15mm

Finish & Type

Glossy Full Body

Matt Full Body

SINTERED **STONE**

800
x3000 mm



Light Weight



Frost Resistance



Flexural Strength



Wear & Tear Resistance



Resistance to Heat



Waterproof Surface



Chemical Resistance



Resistance To UV Rays



Impact Resistance



Stain Resistance



WALNUT

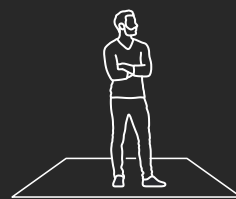
APPLICATION AREAS



KITCHEN UNIT TOP



WORK TOP



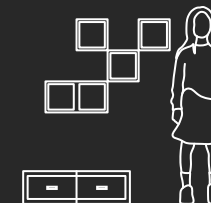
TERRACES



FURNITURE



BATH TUB



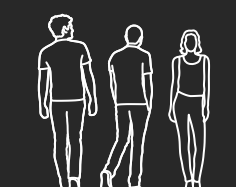
DECORATIVE FURNITURE



STEP & RISER



CORRIDORS & HALLS



FLOORING IN HEAVY TRAFFIC AREA



INTERIOR



DINING TABLE



PUBLIC PARKS & GARDEN

FEATURES



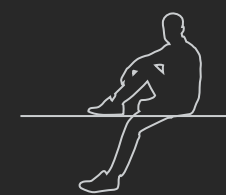
Light Weight



Frost Resistance



Flexural Strength



Wear & Tear Resistance



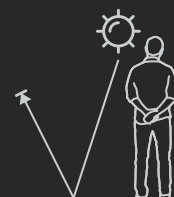
Resistance to Heat



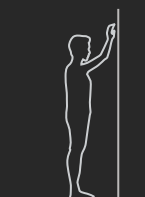
Waterproof Surface



Chemical Resistance



Resistance To UV Rays



Impact Resistance



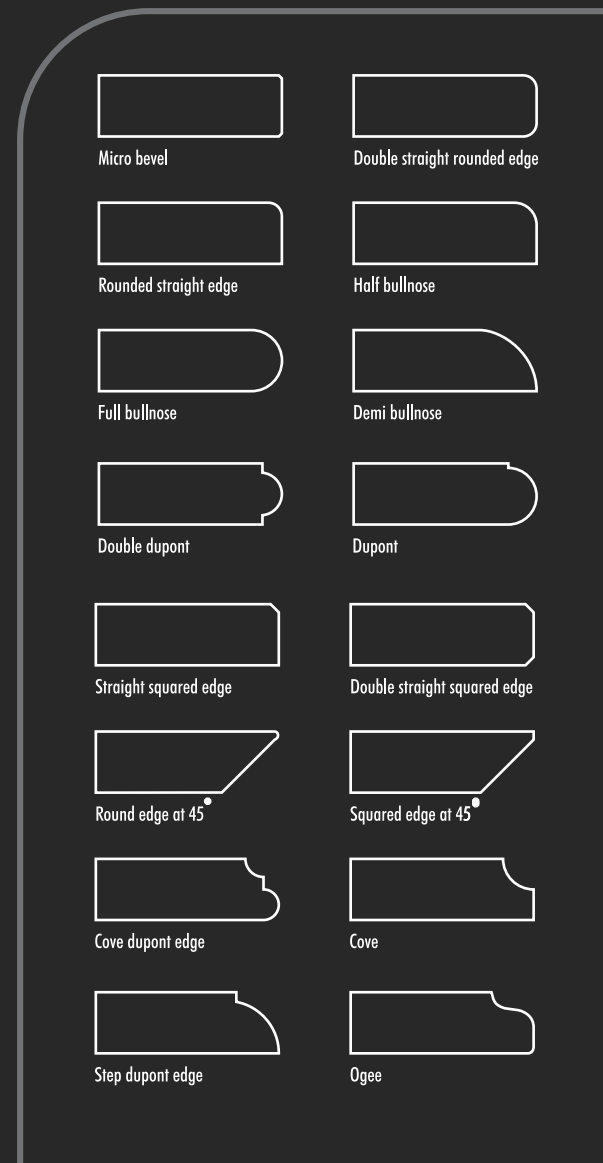
Stain Resistance

Technical Specification

Technical Specification

800x
3000 mm

Edge Profiles



| CHARACTERISTICS | STANDARD AS PER ISO-13006/2018 En14411 gr.bla | VALUES | TEST METHOD |
|-----------------|--|--------|-------------|
|-----------------|--|--------|-------------|

REGULATORY PROPERTIES

| | | | |
|-----------------------------|-------------|---------|----------------|
| Deviation in Length & Width | ±0.5% | ±0.2% | ISO - 10545-2 |
| Deviation in Thickness | ±5% | ±5% | ISO - 10545-2 |
| Straightness of Sides | ±0.5% | ±0.2% | ISO - 10545-2 |
| Rectangularity | ±0.5% | ±0.2% | ISO - 10545-2 |
| Surface Flatness | ±0.5% | ±0.3% | ISO - 10545-2 |
| Color Difference | ΔE<1.00 | ΔE<0.30 | ISO - 10545-16 |
| Glossiness | As per Mfg. | >90% | Glossmeter |

STRUCTURAL PROPERTIES

| | | | |
|------------------|-------------|------------|---------------|
| Water Absorption | ≤0.5 % | ≤0.3 % | ISO - 10545-3 |
| Apparent Density | As Per Mfg. | >2.20 g/cc | DIN 51082 |

MASSIVE MECHANICAL PROPERTIES

| | | | |
|--------------------|-------------|-------------|---------------|
| Modulus of Repture | Min 35N/MM2 | Min 40N/MM2 | ISO - 10545-4 |
| Breaking Strength | Min. 1300 N | Min. 7200 N | ISO - 10545-4 |
| Impact Resistance | As per Mfg. | Min. 0.55 | ISO - 10545-5 |

SURFACE MECHANICAL PROPERTIES

| | | | |
|-----------------------------|-------------|--------------|---------------|
| Surface Abrasion Resistance | As per Mfg. | Min. class 3 | ISO - 10545-7 |
| Moh's Hardness | As per Mfg. | Min. class 4 | EN 101 |

THERMO HYGROMETRIC PROPERTIES

| | | | |
|--------------------------|---------------------------|---------------------------|----------------|
| Frost Resistance | As Per Mfg. | Frost Proof | ISO - 10545-12 |
| Thermal Shock Resistance | Min. 10 Cycle | Min. 10 Cycle | ISO - 10545-09 |
| Moisture Expansion | Max. 0.6mm/m | Max. 0.02mm/m | ISO - 10545-10 |
| Thermal Expansion | Max. 9.0×10^{-6} | Max. 6.0×10^{-6} | ISO - 10545-08 |

CHEMICAL PROPERTIES

| | | | |
|---------------------|-------------|-----------|----------------|
| Chemical Resistance | As Per Mfg. | No Damage | ISO - 10545-13 |
| Stain Resistance | Resistant | Resistant | ISO - 10545-14 |

SAFETY PROPERTIES

| | | | |
|-----------------|-------------|------------|----------------|
| Slip Resistance | As per Mfg. | N. A. | ISO - 10545-17 |
| Fire Resistance | As per Mfg. | Fire Proof | N.A. |

PACKING DETAILS

| TILE SIZE | THICKNESS (approx.) | NO. OF TILES/BOX | WEIGHT/BOX (approx.) | COVERAGE AREA |
|------------|------------------------|------------------|-------------------------|---------------|
| 800 X 3000 | 15MM | 1 Pcs | 81 kg. | 25.83 Sq. Ft. |
| 800 X 3000 | 18MM | 1 Pcs | 100 kg. | 25.83 Sq. Ft. |



Product of India

Support local businesses, buy only Indian!

#SupportLocal